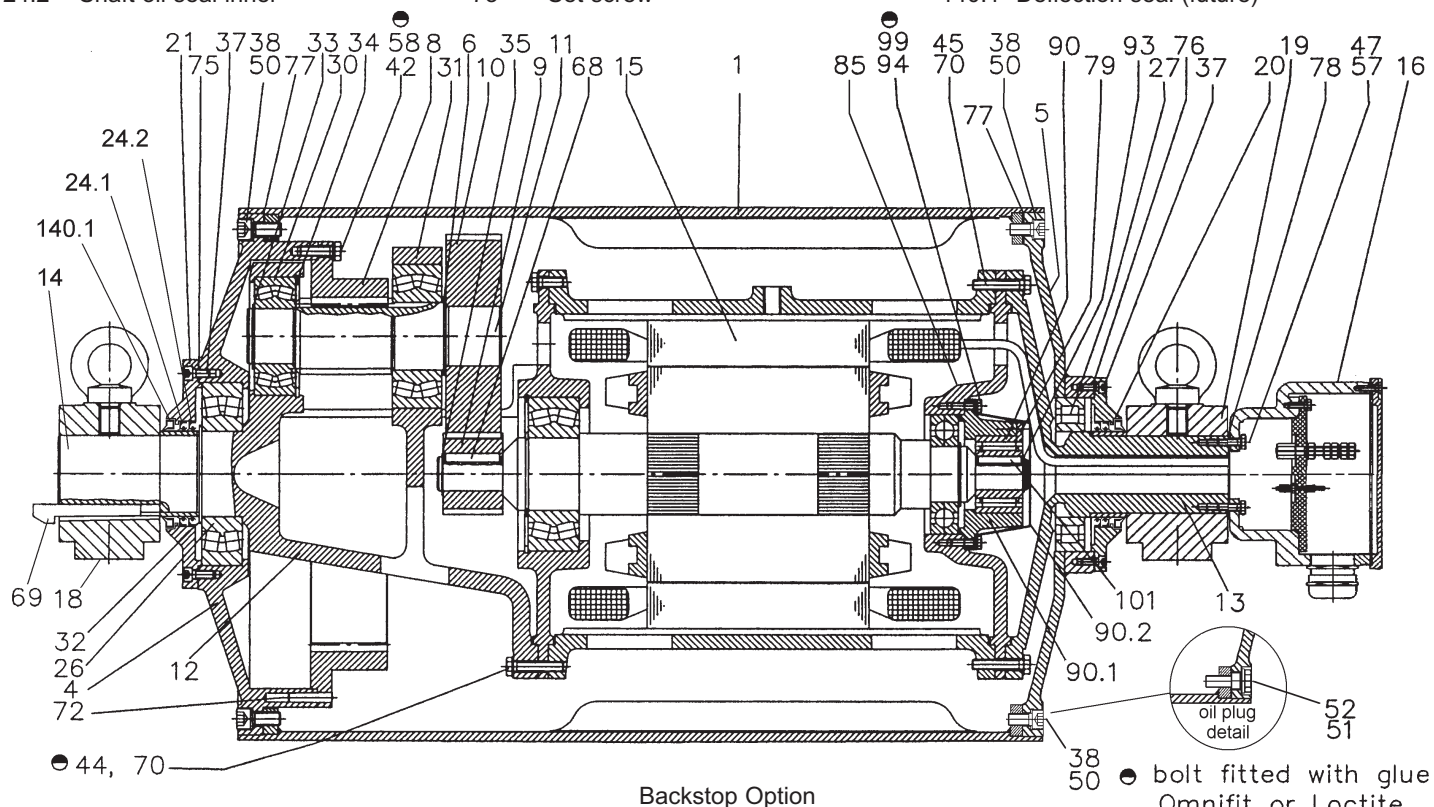




Motorized Pulley 800M & 800H 31.50 in. (800mm)

Spare parts list and sectional drawings

Pos.	Description	Pos.	Description	Pos.	Description
1	Shell	24.3	Shaft oil seal inner (lab option)	75	Gasket
4	End housing with geared rim	24.4	Shaft oil seal outer (lab option)	76	Gasket
5	End housing	26	Bearing	77	Gasket
6	Distance washer	27	Bearing	78	Gasket
8	Geared rim	30	Bearing	79	Holding plate
9	Rotor pinion	31	Bearing	85	Motor flange for backstop/brake
10	Input wheel	32	Retaining ring	90	Backstop
11	Output pinion	33	Retaining ring	90.1	Backstop housing
12	Gear box including rear shaft	34	Retaining ring	90.2	Backstop cover
13	Front shaft	35	Retaining ring	93	Retaining ring
14	Rear shaft	37	Hexagon socket screw	94	Hexagon head screw
15	Stator complete	38	Hexagon socket screw	99	Spring washer
15.1	Rotor	42	Hexagon head screw	101	Key
16	Terminal box complete	44	Hexagon head screw	123	Grease nipple
17	Nipple (for 500H/630M only)	45	Hexagon head screw	130	Brake shaft
18	Mounting bracket rear side	47	Hexagon head screw	131	Mounting bracket bearing cover
18.1	Mtg bracket rear side (lab option)	50	Washer	132	Roller bearing
19	Mounting bracket front side	51	Gasket	133	Brake shaft seal
19.1	Mtg bracket front side (lab option)	52	Magnetic oil plug	134	Brake shaft seal
20	Cover n front side	57	Washer	135	Retaining ring
20.1	Cover with labyrinth groove	58	Spring washer	136	Bolts - bearing cover
21	Cover n rear side	68	Key	137	Spring lock washer
22.1	Cover with labyrinth groove	69	Gib key	138	Key
23	Rear flange	70	Waved spring washer	139	Retaining ring
24.1	Shaft oil seal outer	72	Grooved pin	140	Key
24.2	Shaft oil seal inner	73	Set screw	140.1	Deflection seal (future)



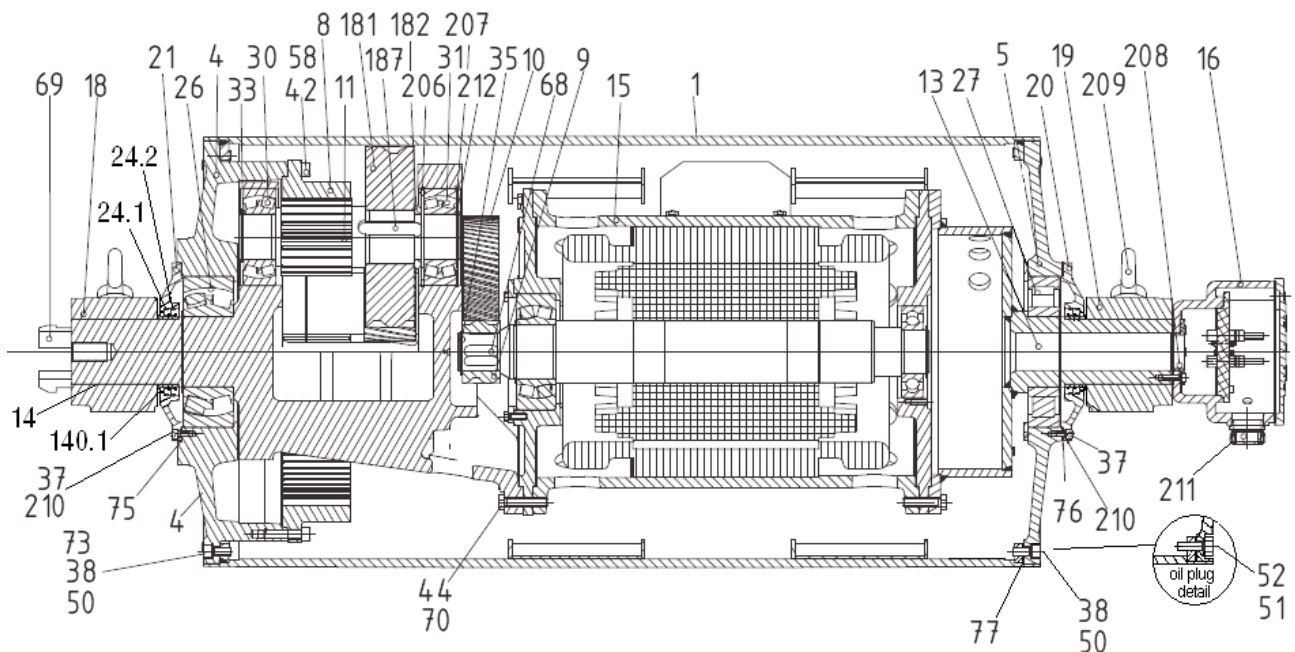
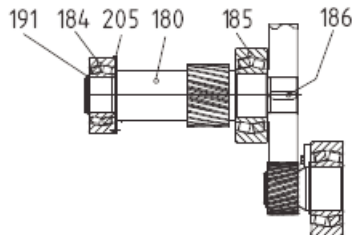


Motorized Pulley 800HD 31.50 in. (800mm)

Spare parts list and sectional drawings

Pos.	Description	Pos.	Description	Pos.	Description
1	Shell	26	Bearing	133	Brake shaft seal
4	End housing with geared rim	27	Bearing	134	Brake shaft seal
5	End housing	28	Bearing	135	Retaining ring
6	Distance washer	30	Bearing	136	Bolts n bearing cover
8	Geared rim	31	Bearing	137	Spring lock washer
9	Rotor pinion	32	Retaining ring	138	Key
10	Input wheel	33	Retaining ring	139	Retaining ring
11	Output pinion	34	Retaining ring	140	Key
12	Gear box n cast steel	35	Retaining ring	140.1	Deflection seal (future)
13	Front shaft	37	Hexagon socket screw	188	Retaining ring
14	Rear haft	38	Hexagon socket screw	189	Retaining ring
15	Stator complete	42	Hexagon head screw	190	Retaining ring
16	Terminal box complete	44	Hexagon head screw	180	Intermediate pinion shaft
20	Cover n front side	45	Hexagon head screw	181	Intermediate pinion
20.1	Cover with labyrinth groove	47	Hexagon head screw	182	Distance bushing
21	Cover n rear side	50	Washer	183	Washer
21.1	Cover with labyrinth groove	51	Gasket	184	Roller bearing
24.1	Shaft oil seal outer	52	Magnetic oil plug	185	Roller bearing
24.2	Shaft oil seal inner	58	Spring washer	187	Key
24.3	Shaft oil seal inner (lab option)	68	key	191	Retaining ring
24.4	Shaft oil seal outer (lab option)	69	Gib key	192	Retaining ring
		70	Waved spring washer	193	Distance washer
		72	Grooved pin	194	Set screw
		73	Set screw	195	Prevailing torque type hex nut
		75	Gasket	196	Key
		76	Gasket	197	Retaining ring
		77	Gasket	205	Retaining ring
		78	Gasket	206	Retaining ring
		85	Motor flange for backstop	207	Retaining ring
		90	Backstop complete	208	Protective ring
		123	Grease nipple	209	Eye bolt
		130	Brake shaft	210	Washer
		131	Mounting bracket bearing cover	211	Cable gland
		132	Roller bearing	212	Retaining ring
				220	Insulation plate

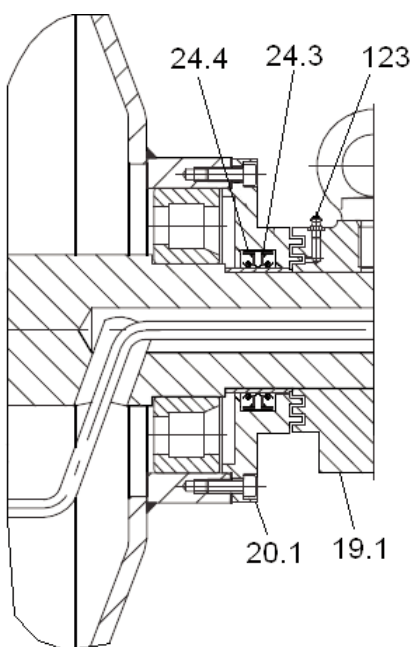
Intermediate stage





Motorized Pulley 800M, 800H, & 800HD Ø 31.50 in. (800mm) **Sectional drawings**

Labyrinth Seal Option



External Brake Shaft Option

